

Notes to candidates

Before you start, you must choose a brief and read the ‘Instructions for candidates’ which give details of the skills you must demonstrate and the type of evidence you must provide.

You should speak to your teacher or lecturer before you start if you are unclear about what is required for this assessment.

Complete the product design specification on the research and specification pro forma.

You must:

- draw conclusions from the research
- ensure your specification covers a range of issues such as aesthetics, function, ergonomics, performance and cost

DESIGN BRIEF & CLIENT DETAILS

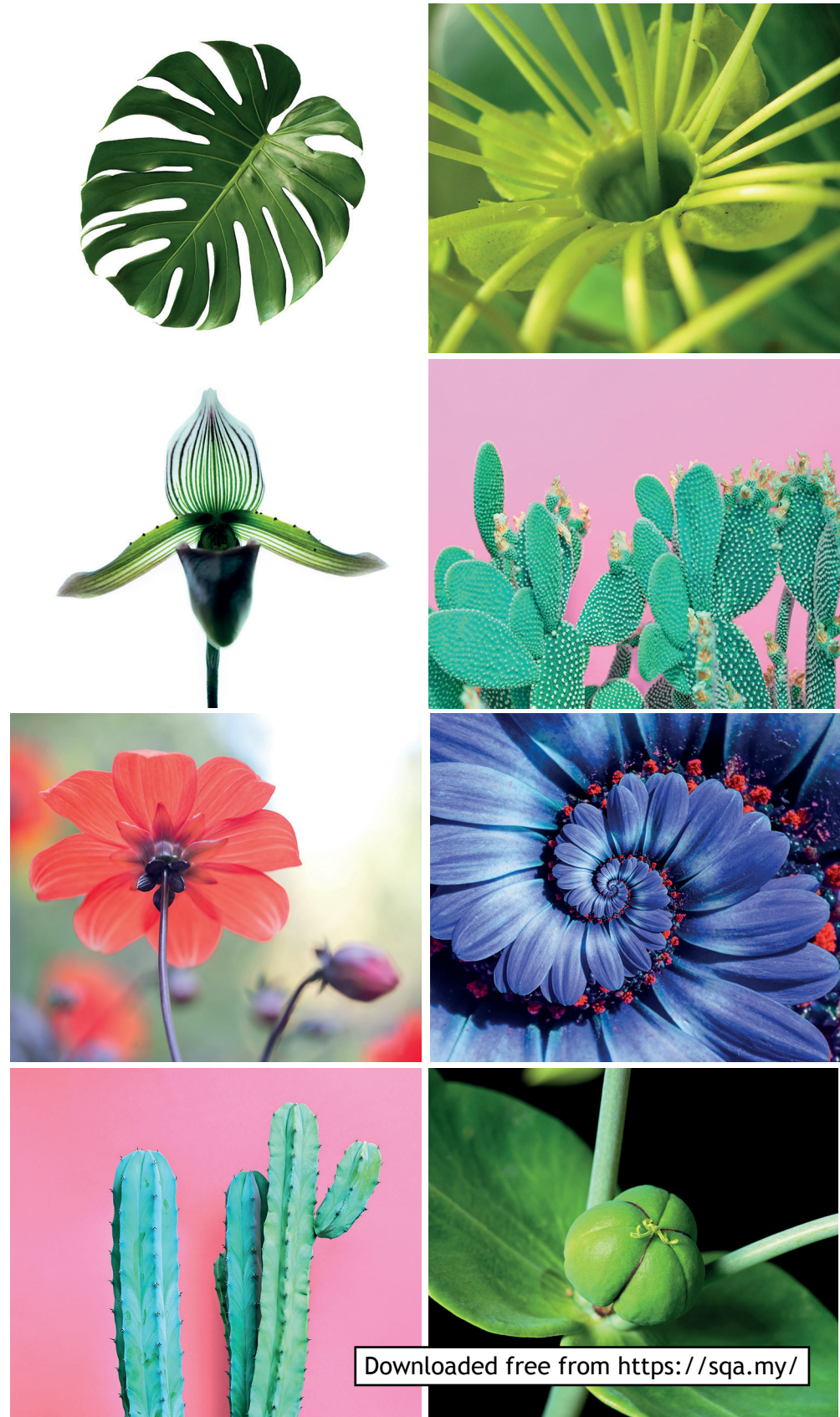
Stalks & Stems is a chain of garden centres with 25 branches across Scotland.

They would like design proposals for ‘stations’ for their education zones where young children can learn about plants and have the opportunity to pot a seedling while their parents are shopping. The station should incorporate a tablet and resources to pot a seedling.

One or more of the components shown on pages 24–26 of the candidate guide may be used within the assembly of the proposal.



PLANTS FOR INSPIRATION



INTERVIEW WITH CLIENT

People in the target market were interviewed and asked a number of questions:

Q1 Can you give me further details of the ‘stations’?

We have an education zone within each of our centres and would like stations where children can learn about plants and have the opportunity to pot a seedling.

We would like individual stations which can be connected to each other to give different configurations.

There should be somewhere to rest or hold the pot during planting.

We would like each zone to have 12 stations.

Q2 What equipment will be required at the station?

The children will be given a plant pot and seedling when they come to the station. Each station should have a trowel and a watering can.

Each station should have a tablet which the children will use to access information about plants and instructions for potting a seedling. It is important that the tablets are secure and can’t get damaged.

There should also be a method of holding soil and compost separately at each station.

Q3 Should the children be seated?

Yes, we would like the seats to be an integral part of the station so that they cannot be moved about.

Q4 How much are you willing to pay for each station?

A maximum of £100 for each station (not including cost of tablets).

Q5 What age of children are the zones aimed at?

3 to 6-year-olds.

Q6 Are there any restrictions on the size of the stations?

Yes, the footprint of each station must be no greater than 1.5 m x 1.5 m.

Q7 Do you have any other requirements of the stations?

The stations must be safe for the users and easy for our staff to clean and maintain.

Q8 Do you have any aesthetic requirements for the stations?

Yes, the people who designed the education zones and the equipment which is already in it used inspiration from plants which had been chosen by children. We would like the same theme to continue.

PICTURES OF PLANTS SHOWN OPPOSITE