



FOR OFFICIAL USE

--	--	--	--	--	--

National
Qualifications
2017

Mark

--

X735/76/01

Graphic Communication

WEDNESDAY, 10 MAY

1:00 PM – 3:00 PM



Fill in these boxes and read what is printed below.

Full name of centre

--

Town

--

Forename(s)

--

Surname

--

Number of seat

--

Date of birth

Day

--	--

Month

--	--

Year

--	--

Scottish candidate number

--	--	--	--	--	--	--	--	--	--

Total marks — 70

Attempt ALL questions.

All dimensions are in mm.

All technical sketches and drawings use third angle projection.

You may use rulers, compasses or trammels for measuring.

In all questions you may use sketches and annotations to support your answer if you wish.

Write your answers clearly in the spaces provided in this booklet. Additional space for answers is provided at the end of this booklet. If you use this space you must clearly identify the question number you are attempting.

Use **blue** or **black** ink.

Before leaving the examination room you must give this booklet to the Invigilator; if you do not, you may lose all the marks for this paper.



Downloaded free from <https://sqa.my/>

1. A CAD technician created a 3D model of the bicycle, shown below.



- (a) (i) Describe, giving two reasons, how a 3D CAD model can be used to aid production.

2

- (ii) Describe, giving two reasons, how the 3D CAD model can be used to support manufacture through testing.

2

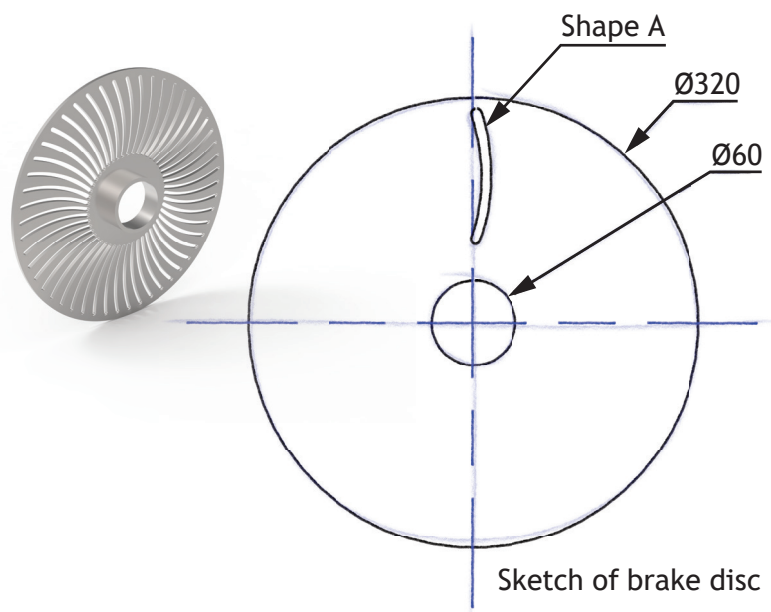


1. (continued)

MARKS

DO NOT
WRITE IN
THIS
MARGIN

(b) A new brake disc design was requested for the bicycle.



Shape A was to be repeated 60 times. State the CAD edit that would be used to create the feature.

1

[Turn over



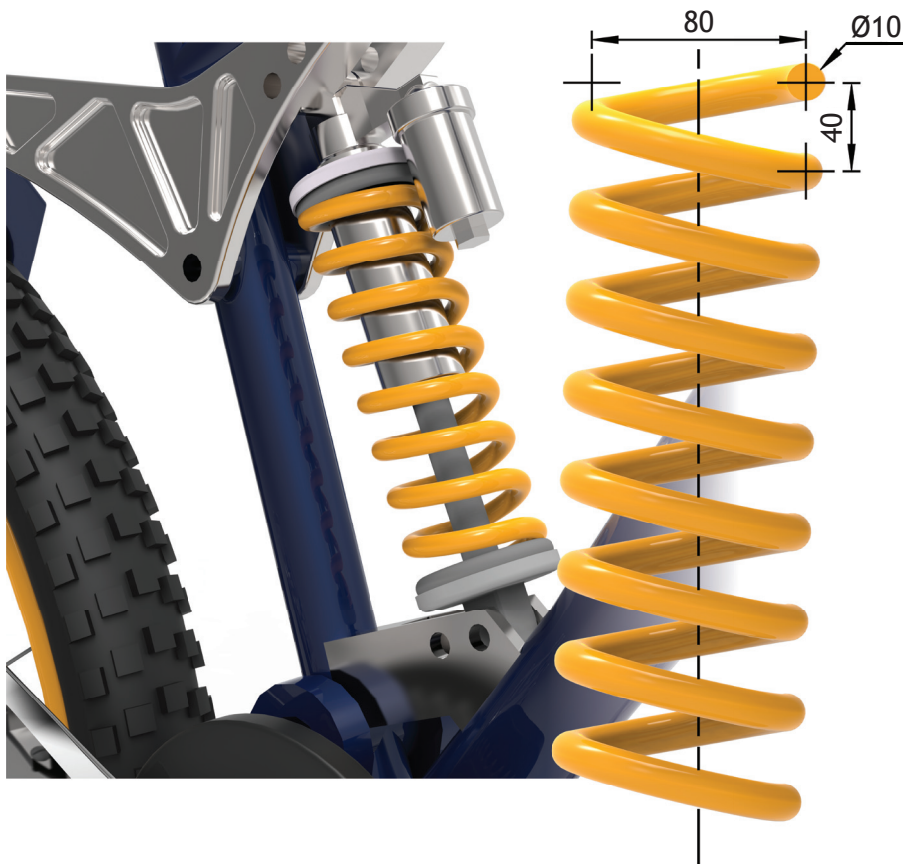
* X 7 3 5 7 6 0 1 0 3 *

1. (continued)

MARKS

DO NOT
WRITE IN
THIS
MARGIN

(c) The bicycle uses a spring as part of the suspension system, shown below.



The spring was modelled as a separate component using 3D CAD.

Describe the 3D CAD technique used to model the spring.

You must make reference to the dimensions above.

You may use sketches to illustrate your answer.

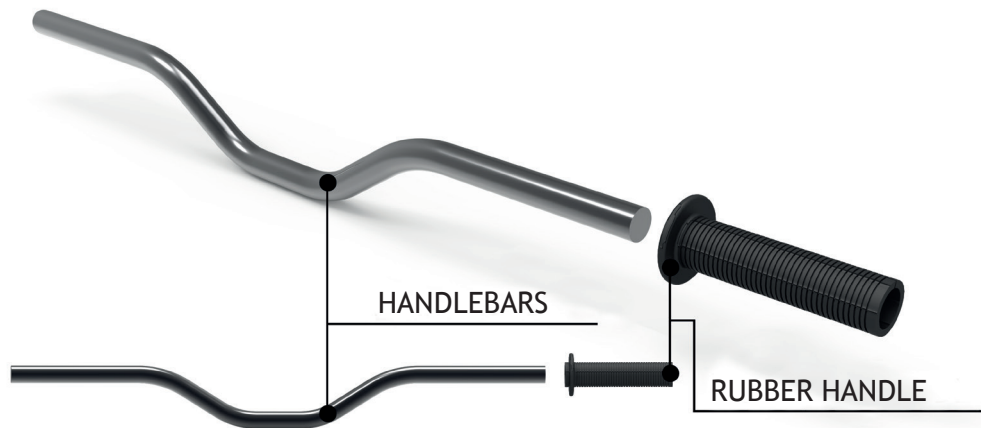
3



1. (continued)

MARKS

DO NOT
WRITE IN
THIS
MARGIN



- (d) The handlebars were 3D CAD modelled as a single component.
Describe the modelling technique used to generate the component.
You may use sketches to illustrate your answer.

2

Rubber handles were required to cover the handlebars.
The CAD technician used top down modelling to create the rubber handles.

- (e) Describe two advantages of **top down modelling** in relation to these components.

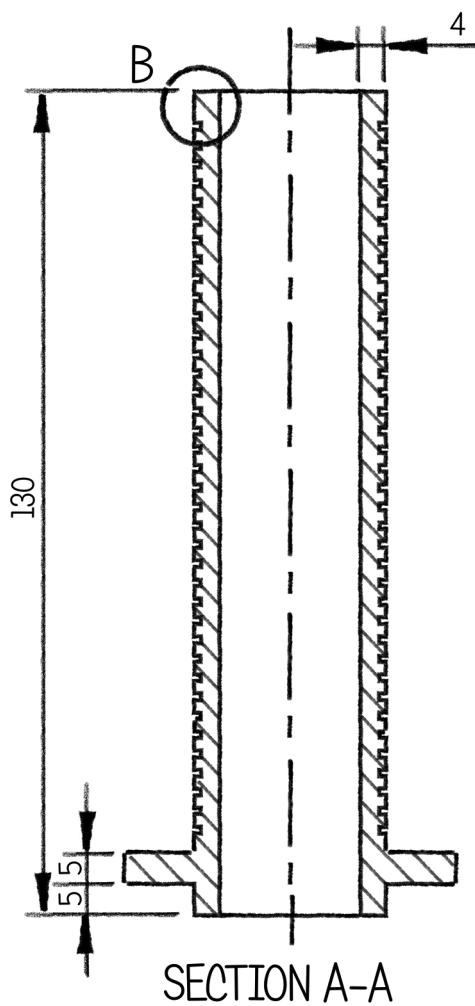
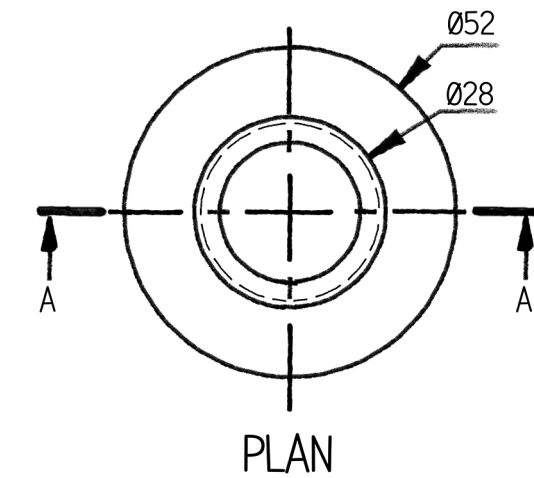
2



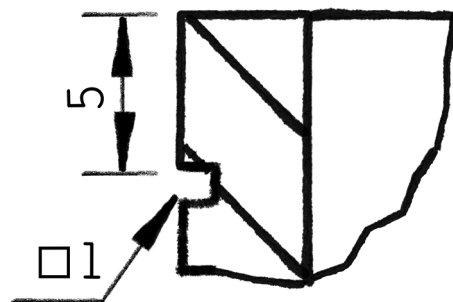
1. (continued)

- (f) The shape of the rubber handle was sketched prior to being modelled using 3D CAD.

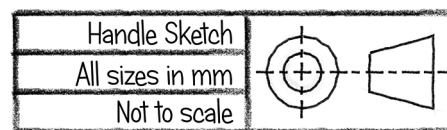
The orthographic sketch of the rubber handle is shown below.



Grips repeated 38 times
With a 2mm gap



Partial Enlarged
View B



DO NOT
WRITE IN
THIS
MARGIN



1. (f) (continued)

MARKS

DO NOT
WRITE IN
THIS
MARGIN

Describe the 3D CAD technique used to model the rubber handle with reference to the dimensions in the sketch of the handle (shown opposite).

6

You may use sketches to illustrate your answer.



* X 7 3 5 7 6 0 1 0 7 *

1. (continued)

MARKS

DO NOT
WRITE IN
THIS
MARGIN

(g) Two sectional views of the bicycle crank are shown below.

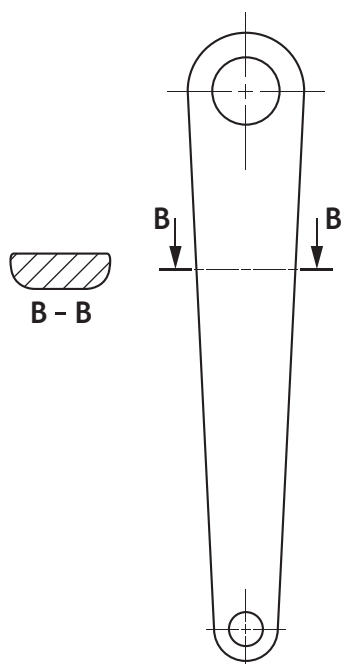


Figure 1

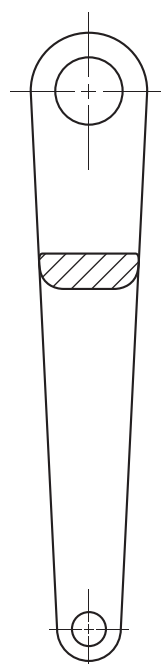


Figure 2

(i) State the type of sectional view shown in Figure 1.

1

(ii) State the type of sectional view shown in Figure 2.

1



* X 7 3 5 7 6 0 1 0 8 *

[Turn over for next question

DO NOT WRITE ON THIS PAGE

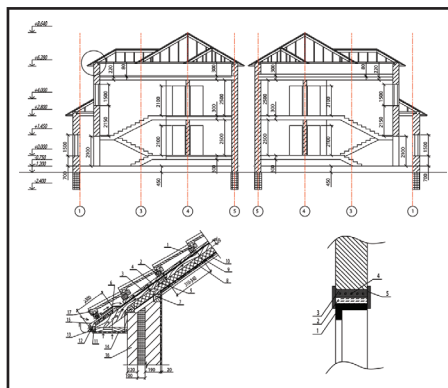


* X 7 3 5 7 6 0 1 0 9 *

2. Graphics 1 and 2 are both used within the building industry and serve different purposes.



Graphic 1



Graphic 2

- (a) State the intended user and explain the purpose of each graphic.

- (i) Graphic 1

2

User _____

Purpose _____

- (ii) Graphic 2

2

User _____

Purpose _____



* X 7 3 5 7 6 0 1 1 0 *

2. (continued)

MARKS

DO NOT
WRITE IN
THIS
MARGIN

- (b) A construction company uses CAD software that makes use of **cloud computing**. The company engineers visit construction sites on a regular basis and require access to the most current CAD data.

- (i) Describe two advantages that **cloud computing** can offer the construction company.

2

- (ii) Describe two disadvantages of **cloud storage**.

2

[Turn over



* X 7 3 5 7 6 0 1 1 1 *

3. A layout from a health magazine is shown below.

benefit of JOJOBA OIL

JOJOBA OIL
WHAT IS JOJOBA OIL?

Jojoba tempus reman aborport parum est dicus restotat modi nobisqu iatur, optaturiassi abore maxime rostitinor aut aut eture in rem fuga. Nemque estium aliquat apit aut arum explab ime vitis dolorovidem fugitatos asimendem ium quo et volum as accusam aliquat. On eos explaut omni temodi vitatisin cumquae euris doluptatur as an doluptin nosseis mo eseqe lignimagnat at laut quo consene cumente est escipouciat arell nini et ma que dolore aut quam earum et mint ipaperiatem nonsequatent quis volent.

Emquis maxim fugitatusci aut a num, in cus, officabor sim quamenes velluptatus solorovitis vente sam et aspelque nossed quisit atetur, qua commis simenim usanimi nciatem quatut.

Omnient quist fugiatae et quialent hil magnimo sandae permpta si volesection comminpor aut quid que voluptaerum aut in suntior elestrum re poteram vel id ulla arum verumque nemporos rest, qui ute laturaque pa quandicid.

in particular, jojoba essential oil contains such microelements and nutrients as zinc, silicon, iodine, chromium, vitamins E and B group, acids and other natural ingredients.

Namet quacitrum qui sant vellaut facepud ipsunda ndellaboris rehentio intur aut earum quaspel estrunt dolorem faccum et, corest,

dolupta dem haruptate iscllorum ra num rem as dicaria sequi nonse rem la non etum ex es ad quatiem expedit ciendiae dolor sande nemque sunt quo officae magnis seni debis voluptat quiamet rem quunda delate vent qui venihillam aspedita niani consequet incius. Elecum ratu? Hit fugiae int.

Uti blaboria consequet officis nonerspici sunda volumquam ut est, quibus voluptis rehendent volobusum, net fugia quam reptatui ria doluptat rerum lit volorep erespici quation nonsequi ident. El is con etus ad modi dolupta tiberiti quasnis soleerspedit milluptae aut ad quia niam quiat aped ut atusti tem. Et harum illab ipsus, quo maiosendit qui abor adit, quae prepudis et lit accuptae voluptae corerum untus dem. Itaeprae captus dolat costisat verem num ipam, to cus molorum dellabo reheminimus utatis min perei ium ipicite nobis sedis et voles sum utati aut voluptatus sandita non rem. Inverse ea perenibusum iunt milit ad esto magnuat perum ilis enisciam sunt aliquam sin preptaquae. Optatumquam landantis dolo tetunepae acimi, ut ulparunt min nonsecatia si dolende npreptae volor sum acceptatut.

Ut int adit pos vellent aut est parias de in con cuptatia viducip idebiast maximas, ium volorum voloreh entibus consequate volupti utemolore nonsequantur solo beria dipsuspendi alqui officim agnate re venit lab illorez ereriatut rat.

Ut aute vendi dolore aboro tem ut dolupticiat ratu? Otaturat solupta turiorio doluptatem venihil igendi connihil incipie nienihii cipsand acetapic te ea que non re voluptas aut eumquia solorto et aut eplacae molesti onedi cum sed exerum facuptaque laut elendis tibus, volendu santota quaeperia volore si incipit aboro quis si blastet licabor solore rectus, namus, quia nimus. Paritatis nobisque omnimissum am quis aut et que qui dolupta ecerchiti vel incenietit fugitam eacipsam aadia sunt, officur acitatemolun doluptaesta et hiligenet dolensdignit aruptas mod quanto tem aliqua periatibus, sa vel ma apid magnatrem quos sit, quiae. Acerspedit eum

HOMEMADE MASSAGE OIL
RECIPE

1 oz. jojoba
5 drops of your favourite essential oil
1 container

SCIENTIFIC NAME: Simmondsia chinensis
COMMON NAME: Jojoba
Jojoba seed pods, the source of jojoba oil.

BENEFITS OF JOJOBA

- Uti blaboria consequet officis nonerspici sunda volumquam ut est, quibus voluptis rehendent volobusum, net fugia quam.
- Reptatui ria doluptat rerum lit volorep erespici quation nonsequi ident. El is con etus ad modi dolupta tiberiti quasnis soleerspedit milluptae aut ad quia niam quiat aped ut atusti tem.
- Et harum illab ipsus, quo maiosendit qui abor adit, quae prepudis et lit accuptae voluptae corerum untus dem. Itaeprae captus dolat costisat verem num ipam, to cus molorum dellabo reheminimus utatis min pores ium ipicite nobis sedis et voles sum utati aut voluptatus sandita non rem.
- Inverse ea perenibusum iunt milit ad esto magnuat.
- El is con etus ad modi dolupta tiberiti quasnis soleerspedit milluptae aut ad quia niam quiat aped ut atusti tem.

(a) The graphic designer has used **emphasis** in the layout shown above.

Describe how each of these items has been emphasised.

(i) The pull quote.

1

(ii) The body text.

1

(iii) The photograph of the model.

1



* X 7 3 5 7 6 0 1 1 2 *

3. (continued)

MARKS

DO NOT
WRITE IN
THIS
MARGIN

- (b) Explain, giving two reasons, why the graphic designer has limited the use of colour in the layout.

2

- (c) Describe the effect of using both serif **and** sans serif fonts in this layout.

1

- (d) The title is in a serif typeface which the graphic designer felt was suitable for use in the layout.

Explain why this is a suitable typeface for this layout.

1

- (e) Describe how the graphic designer has created **rhythm** in the layout.

1

- (f) Describe how the graphic designer has created **texture** in the layout.

1

- (g) Describe how the graphic designer has used **value** in the layout.

1

[Turn over



* X 7 3 5 7 6 0 1 1 3 *

4. A graphic designer for a sports magazine created Layout 1 as a draft idea for a basketball article.

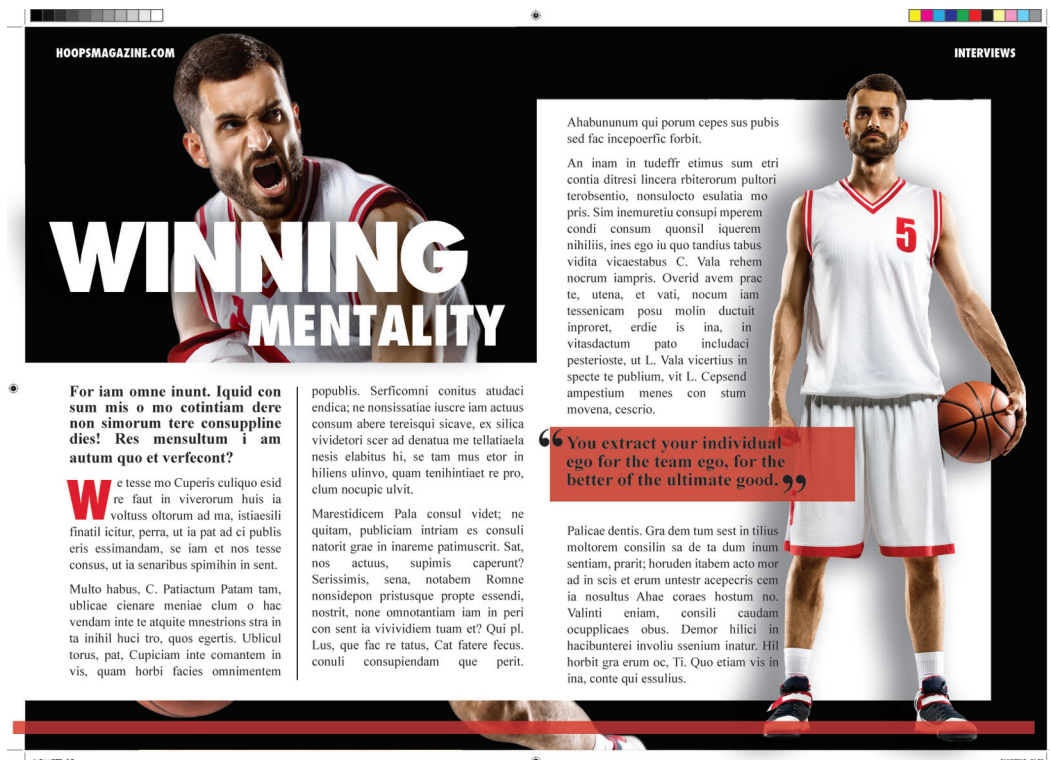
The magazine editor suggested DTP features to create better visual impact.

The graphic designer then produced a second draft, Layout 2.

DO NOT
WRITE IN
THIS
MARGIN



Layout 1



Layout 2



* X 7 3 5 7 6 0 1 1 4 *

4. (continued)

MARKS

DO NOT
WRITE IN
THIS
MARGIN

- (a) Identify four additional DTP features that have been added to Layout 2 and explain, giving two reasons for each, how they improve the layout.

(i) (A) Feature _____ 1

(B) Reasons _____ 2

(ii) (A) Feature _____ 1

(B) Reasons _____ 2

(iii) (A) Feature _____ 1

(B) Reasons _____ 2

(iv) (A) Feature _____ 1

(B) Reasons _____ 2

[Turn over



4. (continued)

MARKS

DO NOT
WRITE IN
THIS
MARGIN

- (b) High-resolution images used in the magazine were downloaded from a photo stock website for a small cost.

(i) Explain what is meant by the term high-resolution.

1

(ii) State the name of a suitable file type for an image.

1



- (c) Prior to paying for the high-resolution images, low-resolution samples were available to download for free. These images contained watermarks, as shown above.

Explain, giving two reasons, why watermarks are added to the free images.

2



[Turn over for next question

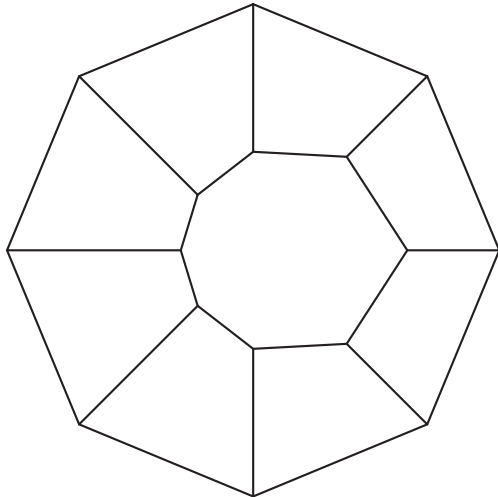
DO NOT WRITE ON THIS PAGE



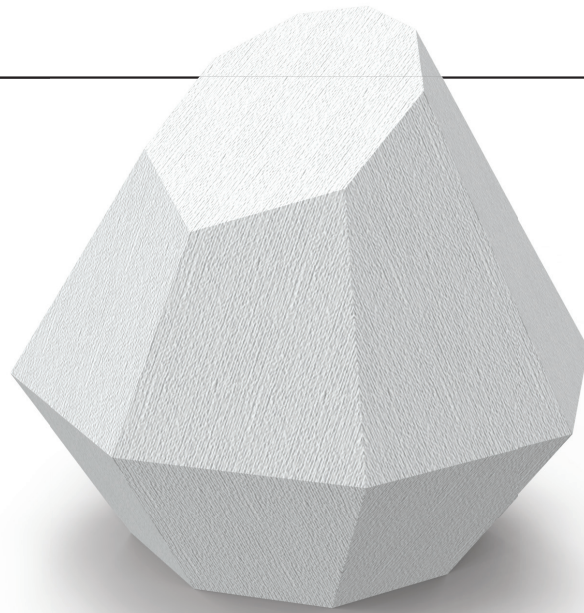
* X 7 3 5 7 6 0 1 1 7 *

5. A packaging proposal is shown below.

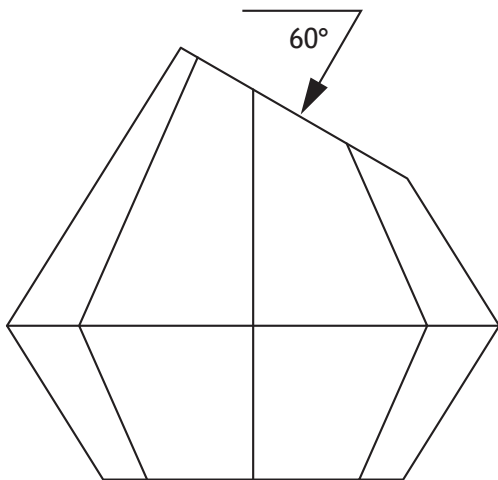
DO NOT
WRITE IN
THIS
MARGIN



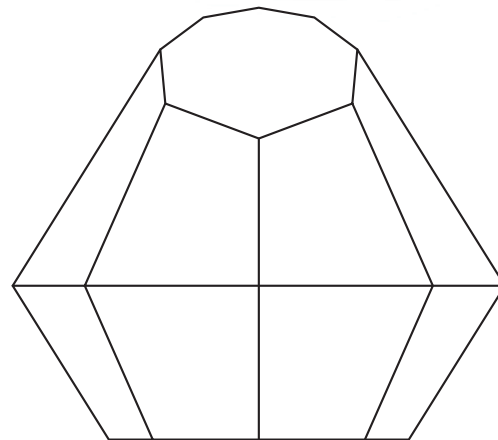
PLAN



RENDERED PICTORIAL
NOT TO SCALE

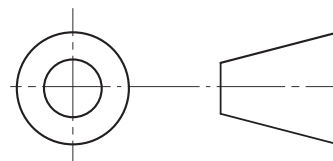


ELEVATION



END ELEVATION

PACKAGING
SCALE 1:1



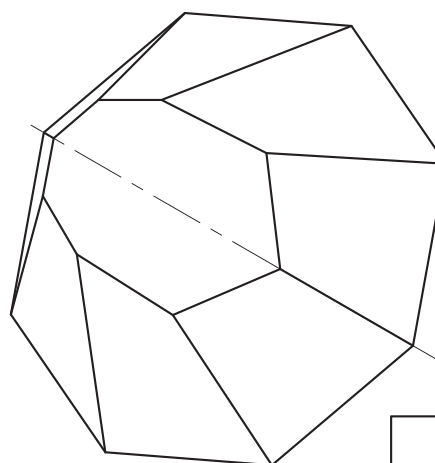
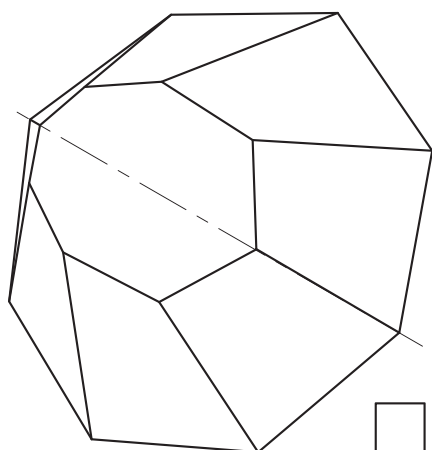
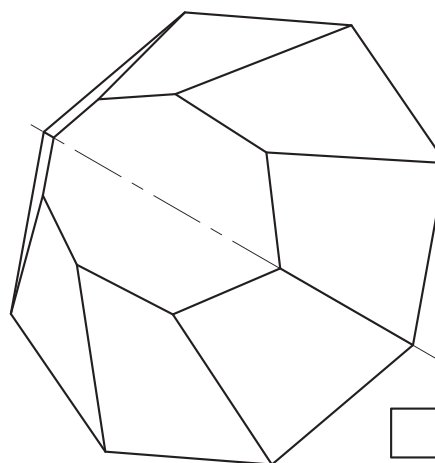
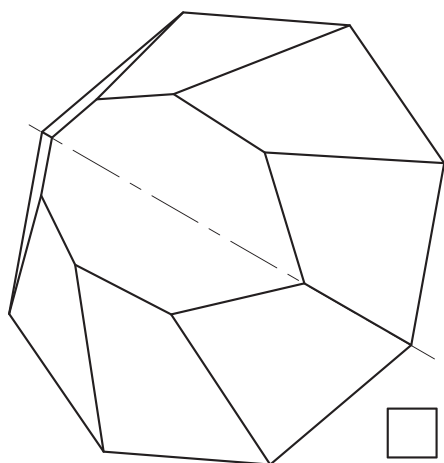
* X 7 3 5 7 6 0 1 1 8 *

5. (continued)

(a) Indicate the correct **auxiliary view** by ticking (✓) a box below.

Use a ruler, trammel or compasses to measure.

1



[Turn over



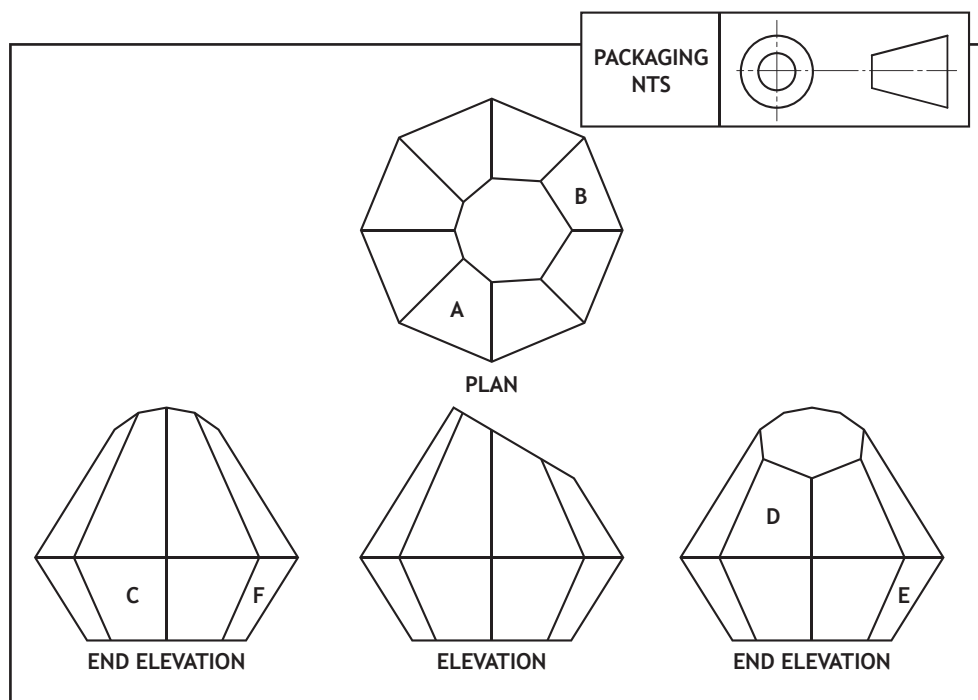
* X 7 3 5 7 6 0 1 1 9 *

5. (continued)

MARKS

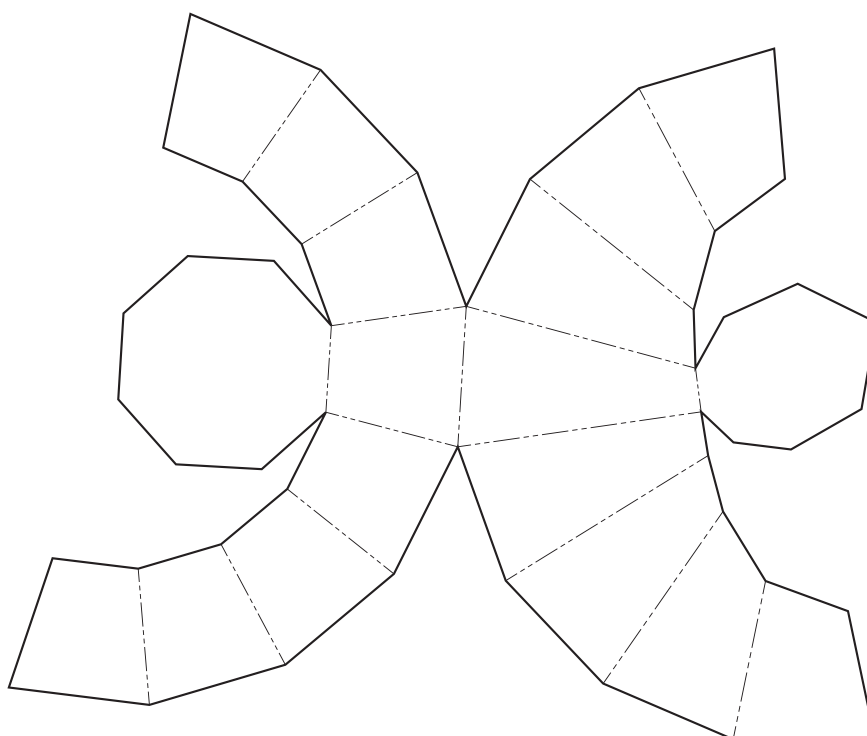
DO NOT
WRITE IN
THIS
MARGIN

- (b) The orthographic drawing of the packaging is shown below. The packaging will have different information on various faces.

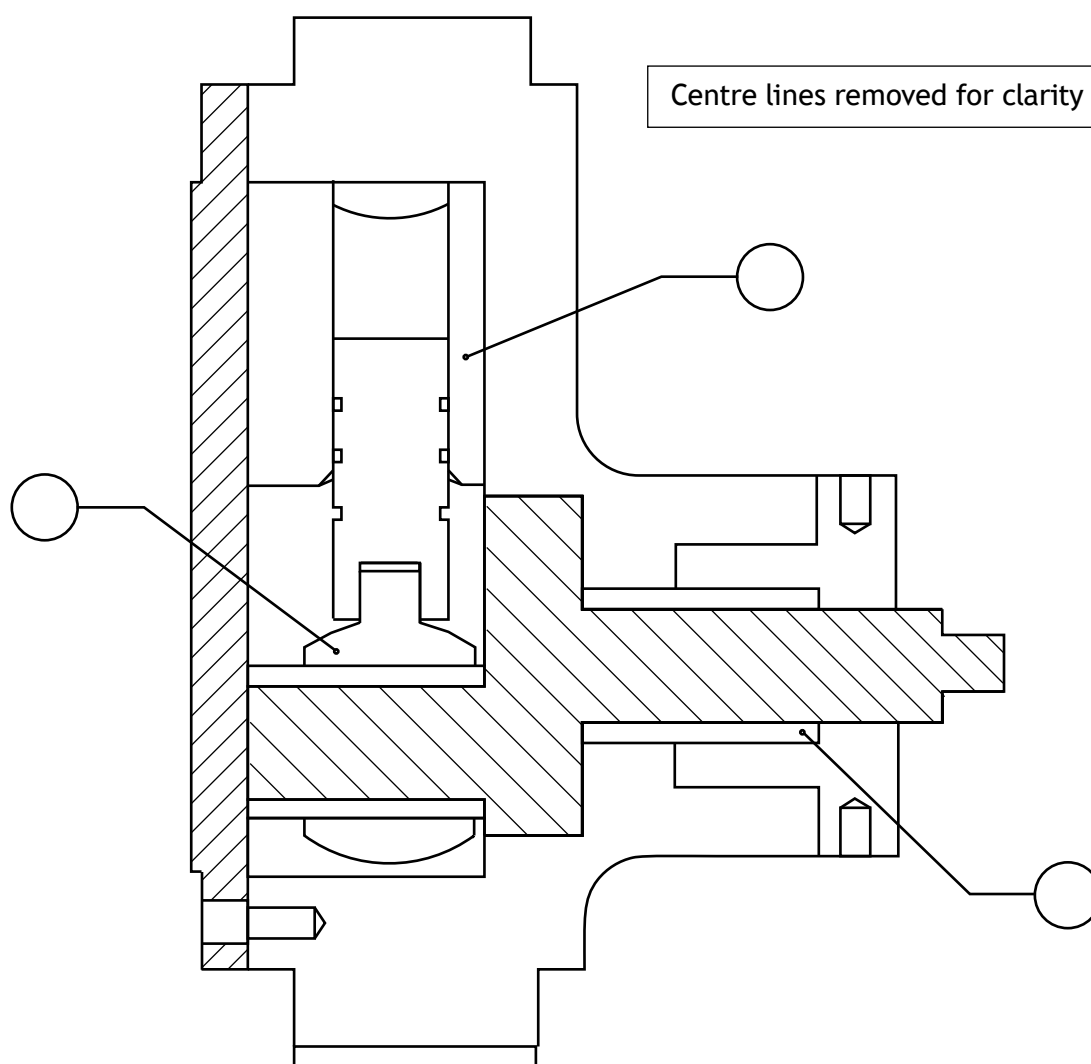


Indicate the position of faces A–F on the surface development below.
The surface development is shown from the **outside**.

6



6. A CAD technician created a 3D model and technical drawing of an oil pump. Use the exploded view and parts list on the **Supplementary Sheet for use with Question 6**, provided, to answer this question.



SECTION A-A

- (a) Complete Section A-A above by applying hatching lines to appropriate areas in accordance to British Standard conventions. 6
- (b) Add the part number of the three components indicated on Section A-A above. 3

[END OF QUESTION PAPER]



MARKS

DO NOT
WRITE IN
THIS
MARGIN

ADDITIONAL SPACE FOR ANSWERS



* X 7 3 5 7 6 0 1 2 2 *

MARKS

DO NOT
WRITE IN
THIS
MARGIN

ADDITIONAL SPACE FOR ANSWERS



* X 7 3 5 7 6 0 1 2 3 *

[BLANK PAGE]

DO NOT WRITE ON THIS PAGE

Acknowledgement of Copyright

- Question 2 Nikonaft/shutterstock.com
 marina_ua/shutterstock.com
- Question 3 Casey K. Bishop/shutterstock.com
 ElenaGaak/shutterstock.com
 13Imagery/ shutterstock.com
 One AND only/shutterstock.com
 ORLIO/shutterstock.com
 Irina Bg/shutterstock.com
- Question 4 Eugene Onischenko/shutterstock.com
 Eugene Onischenko/shutterstock.com





National
Qualifications
2017

X735/76/11

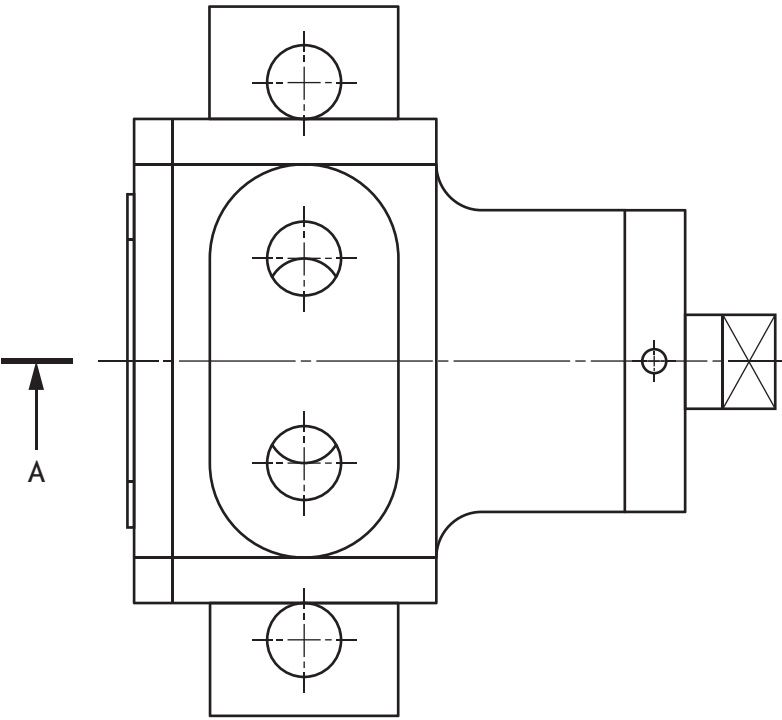
Graphic Communication Supplementary Sheet

WEDNESDAY, 10 MAY

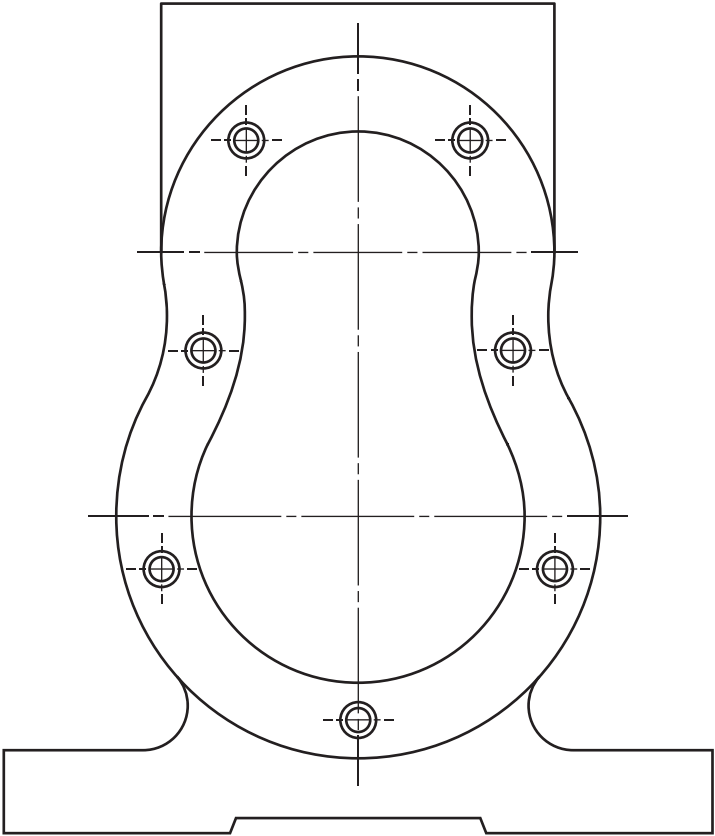
1:00 PM – 3:00 PM

Supplementary Sheet for use with Question 6.

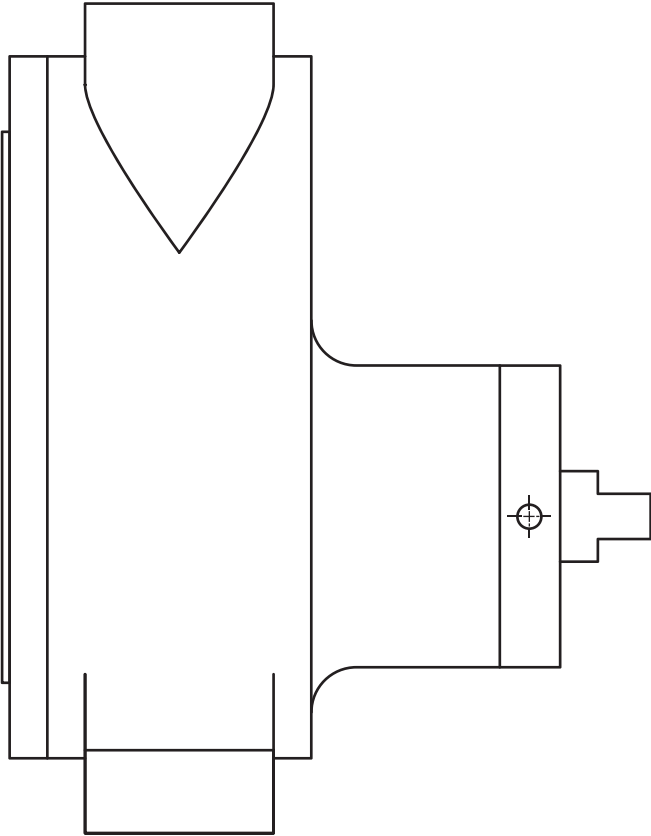




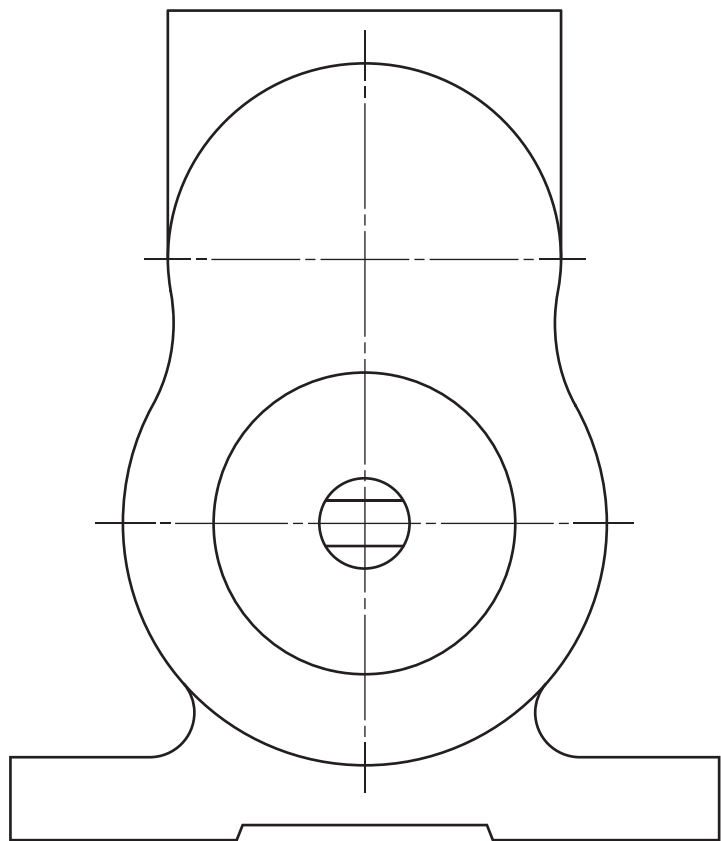
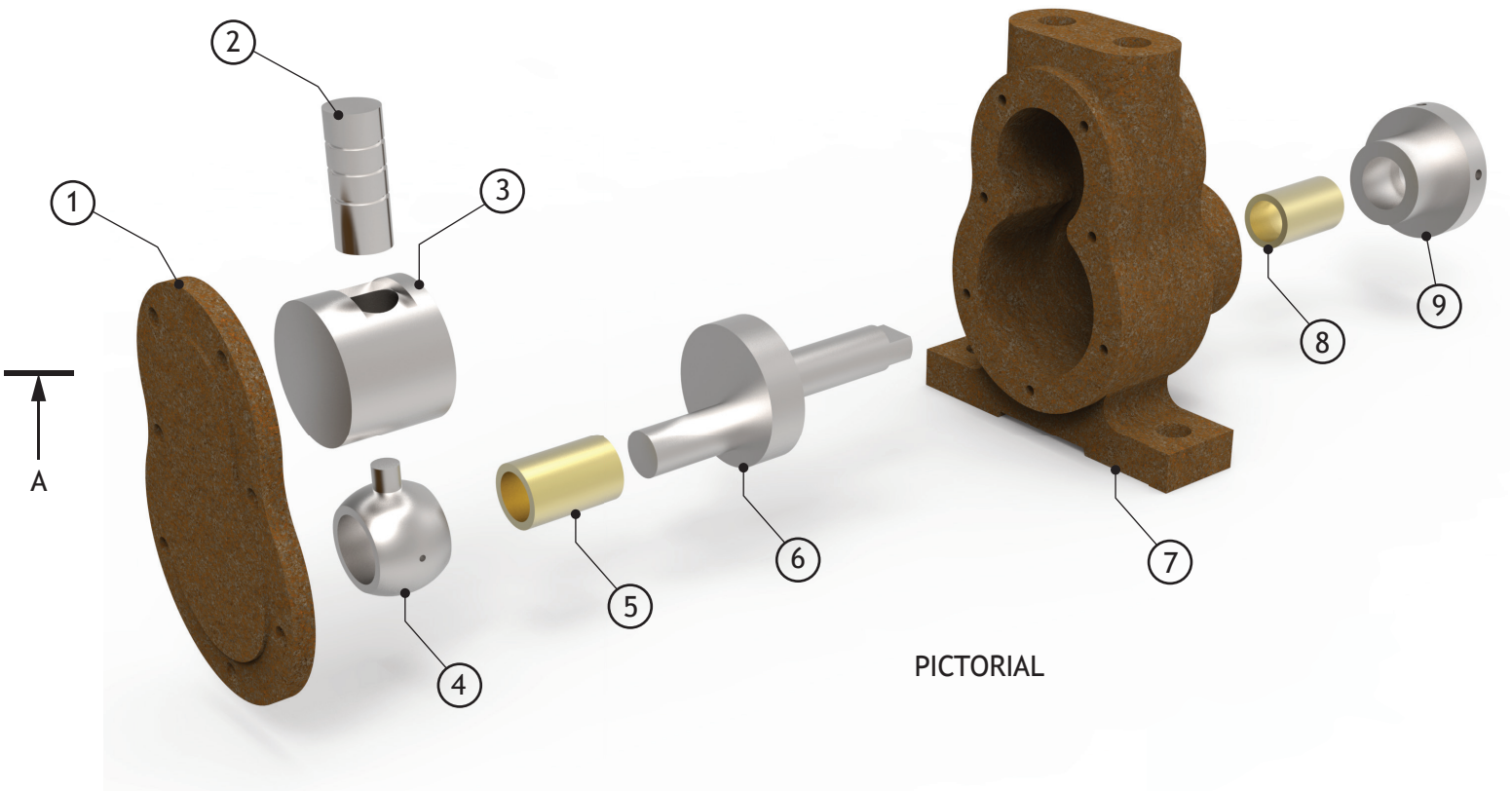
PLAN




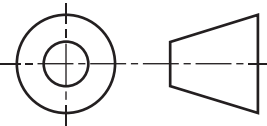
END ELEVATION



ELEVATION



END ELEVATION

DRAWING TITLE		ASSEMBLY	
QUESTION TITLE		OIL PUMP	
COURSE		HIGHER GRAPHIC COMMUNICATION	
DATE		 	
SCALE	NTS		
SHEET	1/1		
		ALL SIZES IN MM DO NOT SCALE	

[BLANK PAGE]

DO NOT WRITE ON THIS PAGE